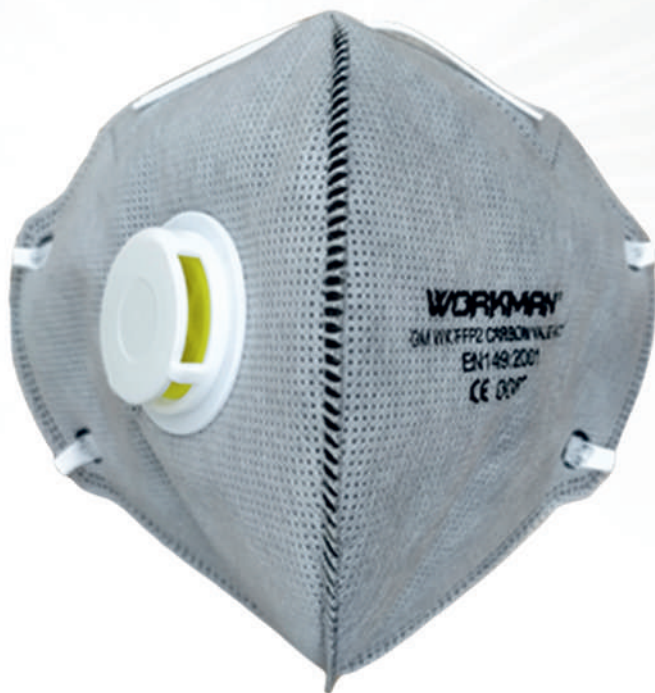


WORKMAN DUSTMASK WK FFP2 CARBON FLAT VALVE

WORKMAN®



MATERIAL : Non-woven synthetic fibre.

PRODUCT DESCRIPTION

FFP2 flat carbon mask with valve.

Nose clip for adjustment.

Foam edge under nose clip.

Straps : Rubber

CERTIFIED: CE EN149

PACKING DETAILS

20 PCS IN A BOX, 20 BOX / CTN

MEAS: 67 X 30 X 40 CMS, CBM 0.0804,

WEIGHT: 6.5 KGS. / CTN



USAGE :

PUBLIC WORKS

PARTICLES

FOOD-BEVERAGE

TRANSPORTATION

MARINE

TEMPORARY WORKERS

MEDICAL

PHARMACEUTICAL

MINING / OIL AND GAS

SAND BLASTING

PAINT WORKS

AGICULTURE

PEST CONTROL

WORKMAN DUSTMASK WK FFP2 CARBON FLAT VALVE